

REGULATION INFORMATION

The StenoCast Ez Receiver must be installed and used in strict accordance with the manufacturer's instructions. This device complies with the following radio frequency and safety standards.

This device complies with Part 15 of the FCC Rules. Operation is subject to the following two conditions:

- (1) This device may not cause harmful interference.
- (2) This device must accept any interference received, including interference that may cause undesired operation.

Federal Communication Commission Interference Statement

This equipment has been tested and found to comply with the limits for a Class B digital device, pursuant to part 15 of the FCC Rules. These limits are designed to provide reasonable protection against harmful interference in a residential installation. This equipment generates, uses and can radiate radio frequency energy and, if not installed and used in accordance with the instructions, may cause harmful interference to radio communications. However, there is no guarantee that interference will not occur in a particular installation. If this equipment does cause harmful interference to radio or television reception, which can be determined by turning the equipment off and on, the user is encouraged to try to correct the interference by one or more of the following measures:

- Reorient or relocate the antenna.
- Increase the separation between the equipment and the receiver.
- Connect the equipment into an outlet on a circuit different from that to which the receiver is connected.
- Consult the dealer or an experienced radio/TV technician for help.

Installation and use of this Wireless LAN device must be in strict accordance with the instructions included in the user documentation provided with the product. Any changes or modifications (including the antennas) made to this device that are not expressly approved by the manufacturer may void the user's authority to operate the equipment. The manufacturer is not responsible for any radio or television interference caused by unauthorized modification of this device, or the substitution of the connecting cables and equipment other than manufacturer specified. It is the responsibility of the user to correct any interference caused by such unauthorized modification, substitution or attachment. Manufacturer and its authorized resellers or distributors will assume no liability for any damage or violation of government regulations arising from failing to comply with these guidelines.

Table of Contents

Page 4	Thank You / Device Features and System Requirements
Page 5	Installing the driver for your StenoCast Ez USB Receivers
Page 6	Discovering What COM port has been assigned to your Ez USB Receivers
Page 8	LiveNote Software Configuration
Page 10	CaseView II Software Configuration
Page 11	Bridge Software Configuration
Page 12	Real Legal Binder Software Configuration
Page 14	Summation Software Configuration

Thank you

Thank you for purchasing the StenoCast X7 Wireless Realtime System featuring Bluetooth wireless technology. The StenoCast X7 creates a wireless connection between the Court Reporter's laptop and up to seven client laptops.

StenoCast Ez USB Receiver

FEATURES

- Support for Microsoft Windows 98, 2000, Windows 2000SE, Windows XP and Vista
- Easy operation and setup

SYSTEM REQUIREMENTS

- Computer: IBM PC or Compatible
- Operating System: Microsoft Windows 98, 2000, Windows 2000SE, Windows XP, or Vista

Installing the Driver for your StenoCast USB Ez Receivers

Before your first use of a StenoCast USB Ez Receiver, you must install the driver. There are two simple methods to do so.

- 1) The court reporter will have an email with a link for the Ez Receiver's driver. If you have an internet connection, the court reporter can forward that email to you, in which case you simply click on the driver link supplied by the court reporter. The driver is then installed automatically.

OR

- 2) Insert the StenoCast CD into your CD drive. Open the folder labeled "Other." Double click the circular red icon labeled "StenoCast Driver." Once you do so, your Ez Receiver driver is installed.
- 3) After installing the driver using either Method 1 or Method 2 above, go to *Device Manager and look under "Ports" to determine what COM port the Ez Receiver was assigned to. It will be entitled, "USB Serial Port" followed by the COM port number. Jot that COM port number down and then enter that number in your litigation-support software's incoming realtime settings.

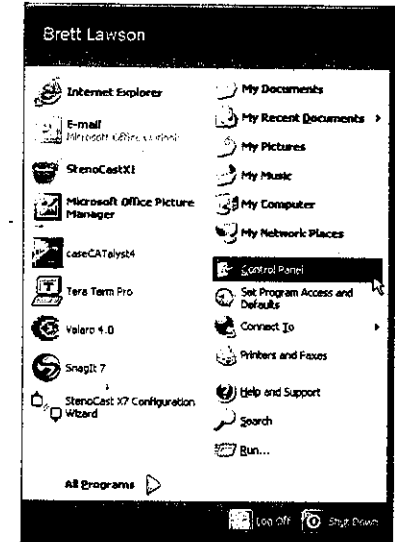
* For assistance with Device Manager, please proceed to page 6.

Note: If you see two USB Serial Port devices listed under Ports, simply unplug your Ez Receiver, wait a few seconds, and then plug it back in. Watch to see which device listing under Ports disappears and then reappears. That will be your Ez Receiver.

Discovering what COM port in Device Manager has been assigned to your StenoCast USB Ez Receiver

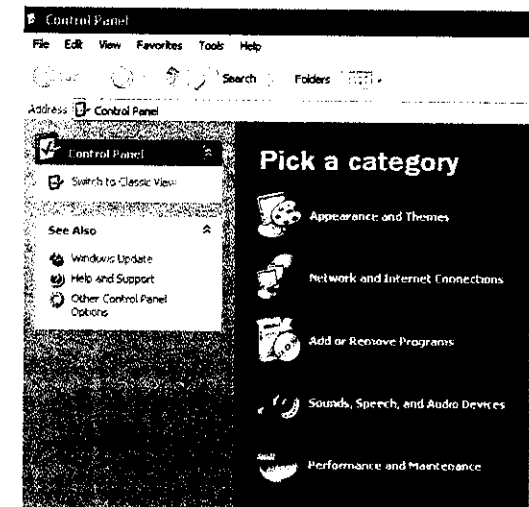
Step 1:

From the desktop of your computer click the Start button. Then select the Control Panel. If you are using Windows 2000, click Start, select Settings, and then select Control Panel from the menu.



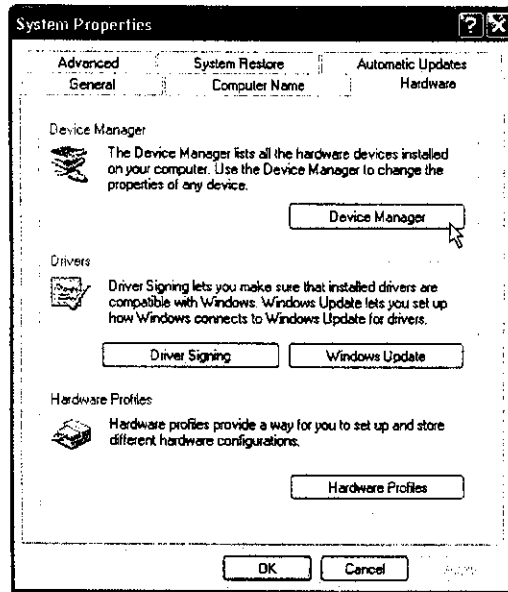
Step 2:

Once in the Control Panel, make sure that the Control Panel is in classic view. If your Control Panel looks like the picture to the right, then select "Switch to Classic View" from the menu on the left.



Step 3:

Double-click the System Icon



Step 4:

Once the system properties window opens, click the Hardware tab then click the Device Manager button.

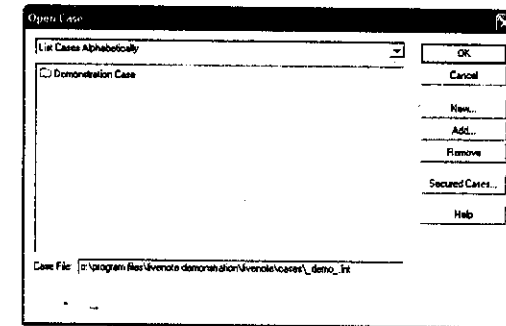
Step 5:

Once in the Device Manager, click the plus sign next to the ports section to expand the tree. Then find the listing for **USB Serial Port**. Once you have found the COM port for your StenoCast Ez USB receiver, jot it down, as this is the COM port number you will use in your client's litigation-support software. For instructions on setting up specific litigation-support software, please find the software listed in the index on page 3 and proceed to the appropriate section.

LiveNote Configuration

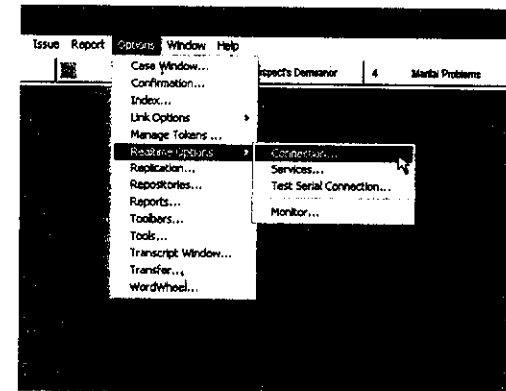
Step 1:

Open your LiveNote program. Then **Select the current case you are working on or create a new one if you wish.**



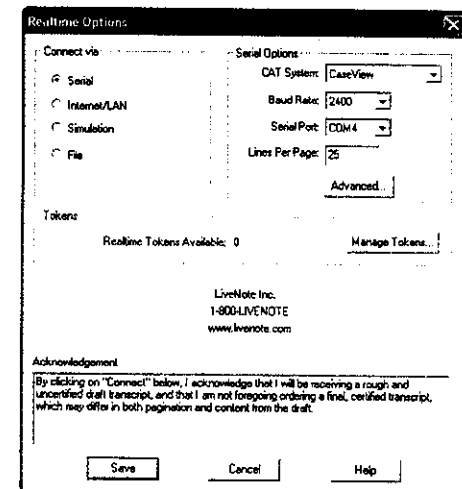
Step 2:

After selecting a case or creating a new one, you will arrive at the main LiveNote screen. From the menu at the top the screen select **Options> Realtime Options> Connection...**



Step 3:

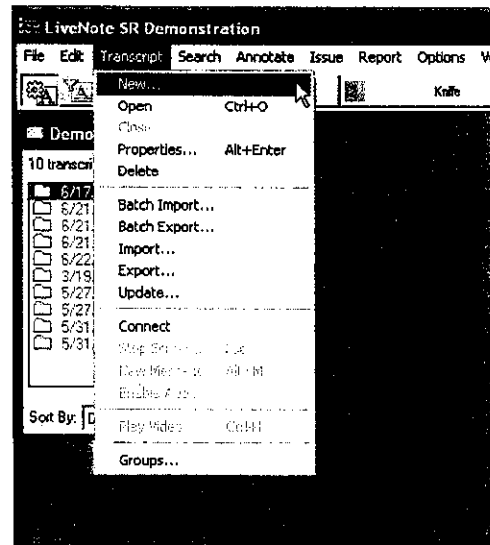
You should now see the Realtime Options window. Set the serial port setting to the **Com port you noted earlier in previous section (page 10)**. Make sure the **baud rate is set at 2400** and the CAT system is set to **CaseView**. When you have completed adjusting the settings click **Save** at the bottom of the window. You are now configured to connect to the Reporter's computer using LiveNote. Proceed to the next step for connection instructions.



CaseView II Configuration

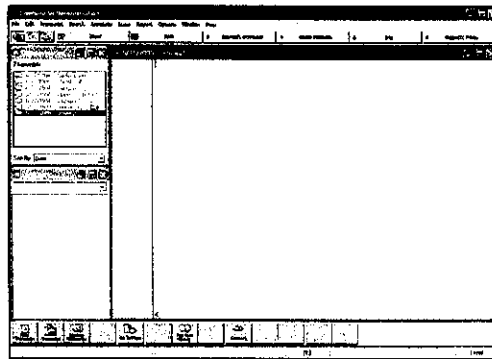
Step 4:

To start viewing Realtime in LiveNote open the **Transcript Menu** at the top of the LiveNote main screen. Then select a new transcript or open existing one if you wish.



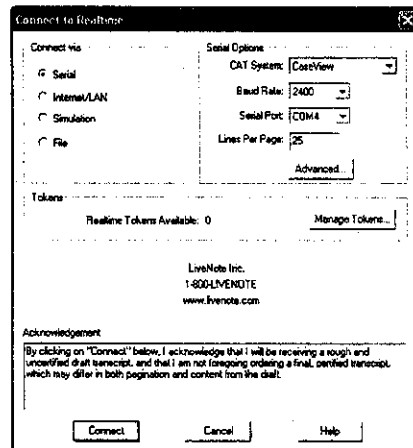
Step 5:

After selecting a new transcript you should see a blank window with the transcript name at the top. Now click the **Connect** button at the bottom of the screen.



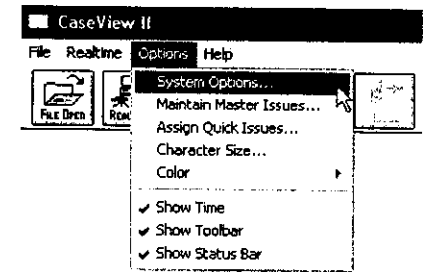
Step 6:

You should now see the **Connect to Realtime** window. Glance at the settings to make sure they are what you chose earlier. Once you have confirmed the settings, click the **Connect** button at the bottom left of the window. You should now be connected to the StenoCast X7.



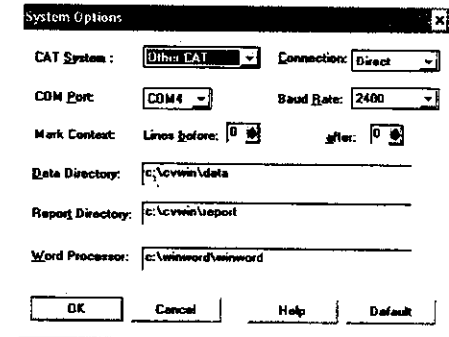
Step 1:

Open your CaseView II program. Then click on the **Options** tab at the top of the screen. Then select **System Options...**



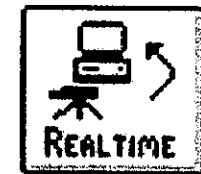
Step 2:

You should now see the **System Options** window. Set the Com port setting to the **Com port you noted earlier in the previous section (page 7)**. Make sure the baud rate is set at 2400 and the CAT System is set to whatever Realtime software the Court Reporter is using. You are now configured to connect to the Reporter's computer using CaseView II. Proceed to the next step for connection instructions.



Step 3:

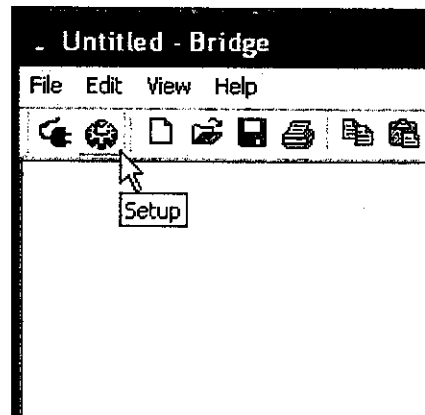
To start viewing Realtime in CaseView II, click the **Connect** button in the upper left hand area of your screen. You should now be connected to the StenoCast X7.



Bridge Configuration

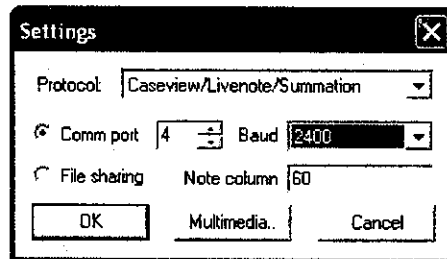
Step 1:

Open your Bridge program. Then Click on the Setup button in the top left area of the screen.



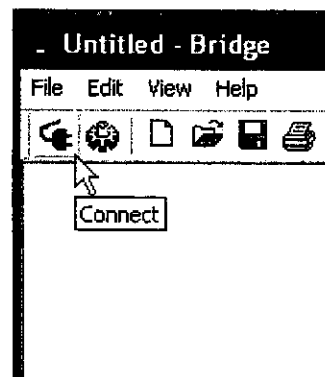
Step 2:

You should now see the Settings window. Set the Com port setting to the Com port you noted earlier in the previous section (page 7). Make sure the baud rate is set at 2400 and the Protocol is set to Caseview/Livenote/Summation. You are now configured to connect to the reporter's computer using Bridge. Proceed to the next step for connection instructions.



Step 3:

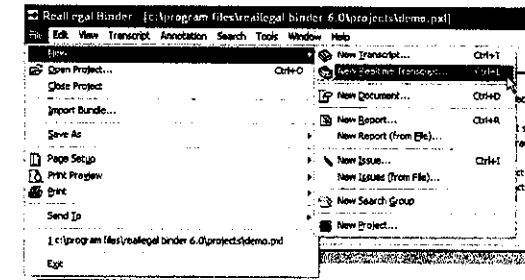
To start viewing Realtime in Bridge, click the Connect button in the upper left area of the screen. You should now be connected to the StenoCast X7.



Real Legal Binder Configuration

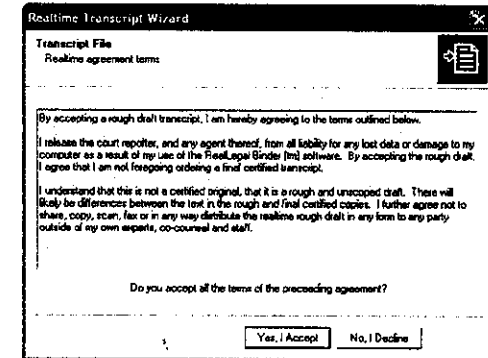
Step 1:

From the default screen open the File menu in the top left corner of the screen. Then select **New>New Realtime Transcript**. Or you may hit **Ctrl+L** as a shortcut.



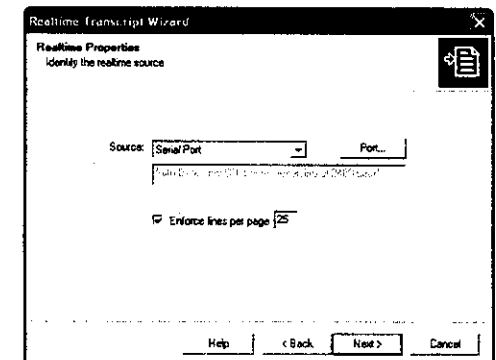
Step 2:

Once you have selected a New Realtime Transcript, you will see the Realtime Transcript Wizard window. The first step in this process is the Realtime Agreement Terms. Once you have read the terms, click on the **Yes, I Accept** button.



Step 3:

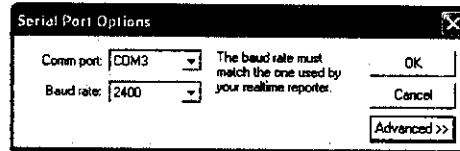
The next window to come up will be the Identify the Realtime Source window. Make sure the Source displayed says **Serial Port**. Then Click on the Port button to Check your settings.



Summation Configuration

Step 4:

At the Serial Port Options window select the **Com port** you noted earlier in the previous section (page 7). Also make sure the **baud rate** is set at **2400**. Once you have confirmed these settings, click **OK** to exit the window. Then click **Next** from the Identify the Realtime Source window.



Step 1:

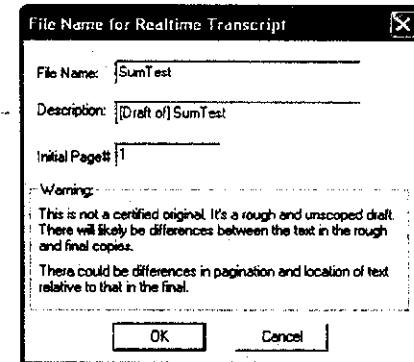
From the default screen Click the **Realtime** button near the top of the window.



Realtime

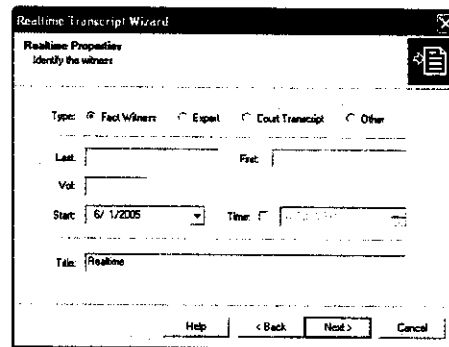
Step 2:

You will now see the File Name for Realtime Transcript window. Give the Transcript a file name, then click **OK**.



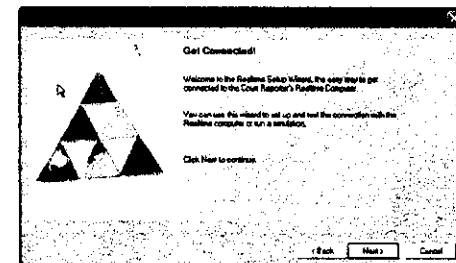
Step 5:

The next window you see will be the **Identify the Witness** window. Input any relevant information if you wish and then click **Next**. You will now be receiving wireless realtime from the StenoCast X7.



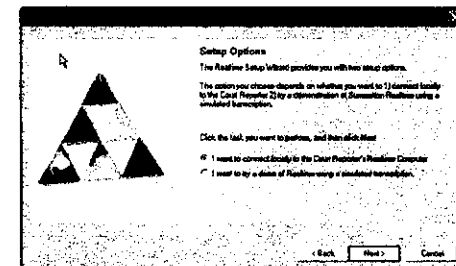
Step 3:

You will now see the first Summation Connection Wizard window. Click **Next** at the introductory window.



Step 4:

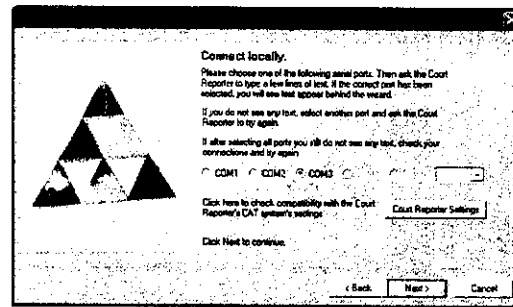
You will then see the Setup Options window. Select **I want to connect locally to the Court Reporter's Realtime Computer**. Then click **Next**.



How to Change an Assigned COM Port Number

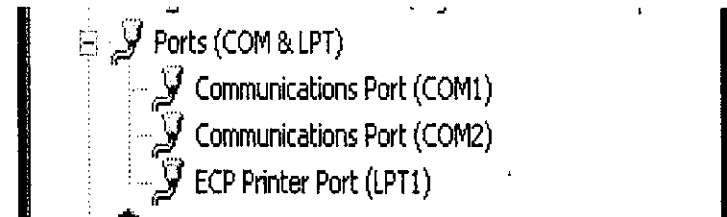
Step 5:

Next you will see the Connect locally window. Then select the Com port you noted earlier in the previous section (page 7). Next, click the **Court Reporter Settings** button.



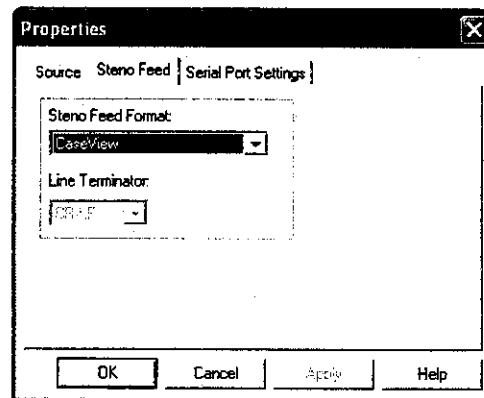
Go to Device Manager / Ports

Double click on the port you would like to assign a different COM port number to.



Step 6:

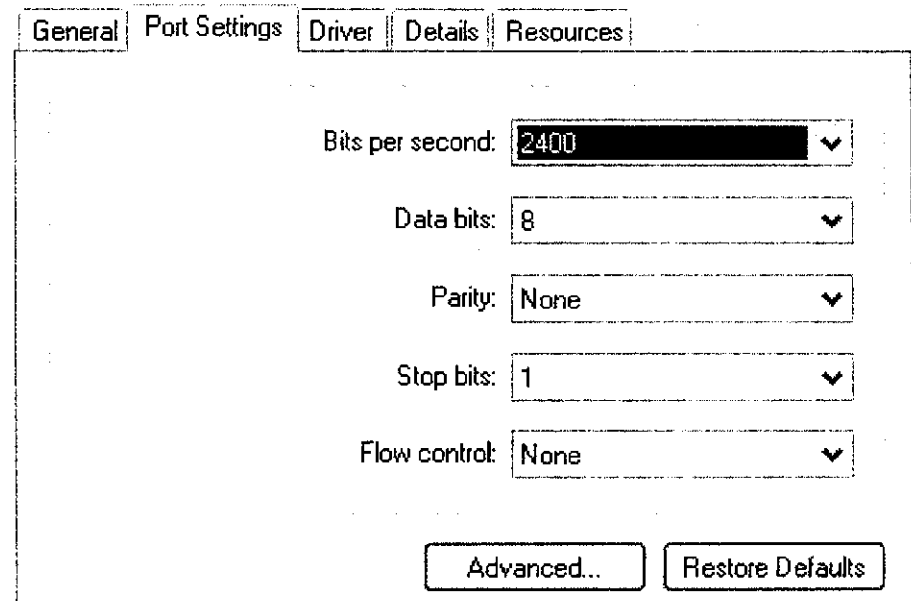
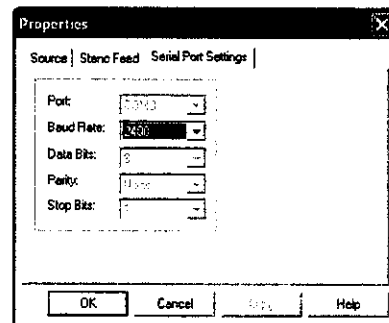
In the Properties window click the **Steno Feed** tab. Then select **CaseView** as the Steno Feed Format.



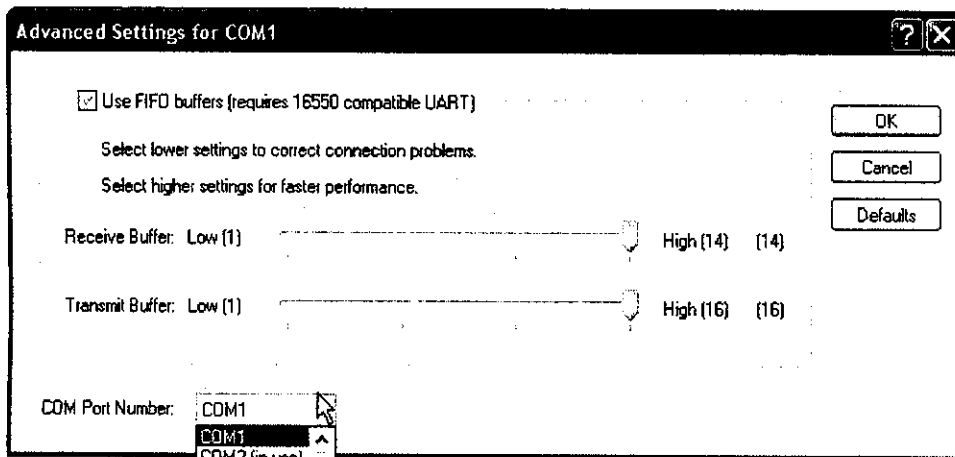
Select the Port Settings tab, and then click Advanced

Step 7:

Next, click the **Serial Port Settings** tab. Then select **2400** for the Baud Rate. Click **OK** to save the settings.



At the bottom of this window you will see COM Port Number and a drop-down menu with a COM port listed. Select a COM number (lower numbers are better) and then click OK. You may then receive a warning message. Click Yes that you would like to continue.



How to View Device Manager when you are “Locked Out”

Click on the Start button, and then click Help and Support.

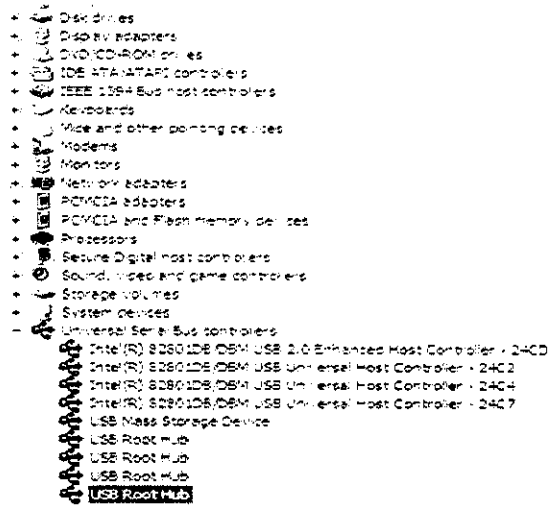
In the upper left corner you should see a Search box. Type in “Device Manager” and click the arrow.

When the search results are displayed, in the left column under the heading Overviews, Articles and Tutorials, at the bottom you will see “Device Manager.” Click on “Device Manager.”

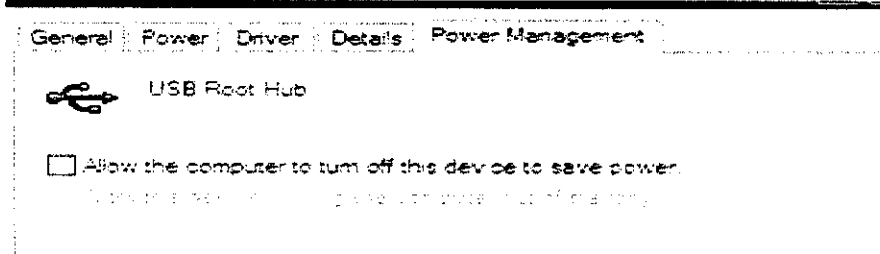
When the results are displayed in the main pane, you can then click on “Open Device Manager.”

Power Management USB

Turn off USB power saving mode



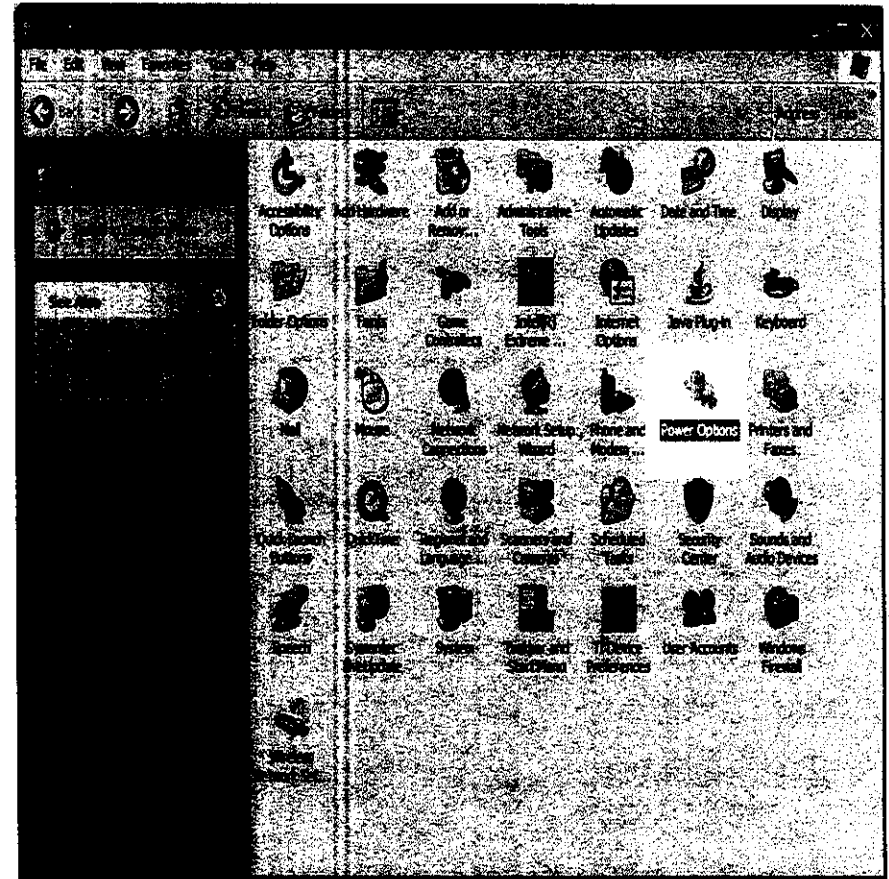
Go to Device Manager. Scroll down to Universal Serial Bus controllers. Click on the plus (+) sign. Starting at the bottom, double click on USB Root Hub.



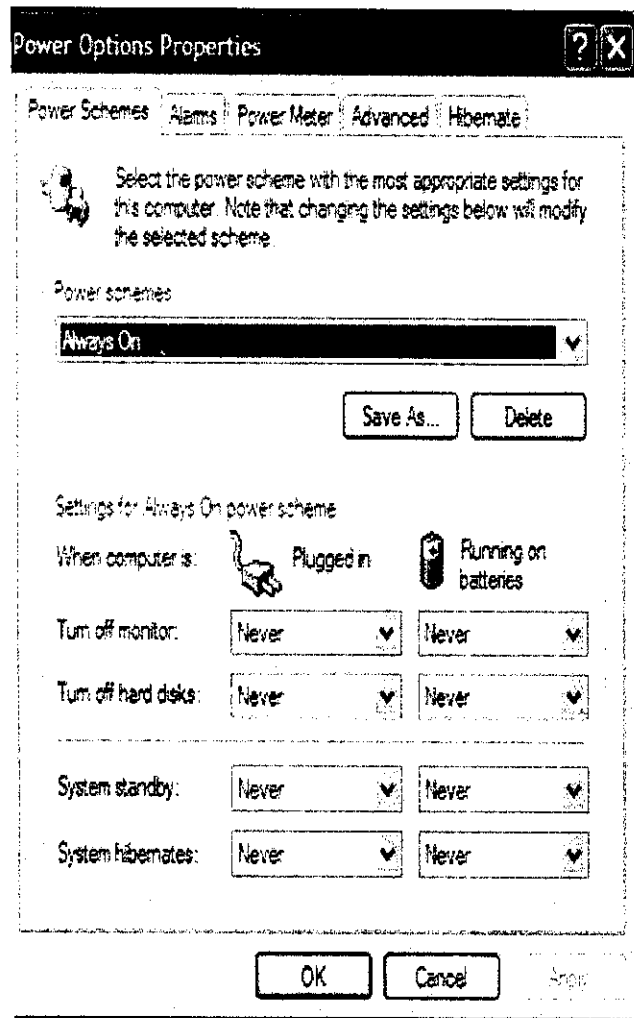
Make sure there is not a check mark in the box next to “Allow the computer to turn off this device to save power.” After you click “OK,” then proceed to the next “USB Root Hub” and double click that item and repeat these same steps.

Power Management: Laptop

Turn off power saving features



In the Control Panel double click the Power Options icon.



Make sure the Power schemes is set to "Always On," and the Settings for Always On power schemes are all set to "Never."